



AZRIELI TOWN

MODI'IN

A new standard of residential rentals



*image for illustration purposes only

Introducing Azrieli Town Modi'in, a distinctive new residential tower spanning 11 floors. Experience the allure of our exquisitely designed and furnished 2- and 3- room apartments, complete with balconies, parking, optional storage rooms, and an array of services crafted for your utmost comfort. Benefit from the renowned Azrieli Group's high standards of construction, reliability, and responsibility.

Complex B is a multi-use project encompassing an office tower, residential tower, business hotel, and commerce center – all in one dynamic space. Immerse yourself in the vibrant environment with an array of shops and cafés.

Conveniently located adjacent to the Azrieli Modi'in Mall, the project offers central accessibility to all major transportation routes in the city and to the exit roads to Tel Aviv and Jerusalem. Furthermore, it's in close proximity to Anava Park.

Azrieli Town introduces a hassle-free rental experience with long-term leasing, transparent rent and no real estate agent fees.

Anticipated move-in: 2024

Residential Tower:

- Separate entrance lobby for the residential tower
- Residents' club including an outdoor area with seating
- Conference room
- Screens in the elevator lobby
- Mail and package room
- Secure shelters on each floor



More details:
azrielitown@azrieli.com

*6 7 6 2

2-Room Apartment Style C

In the apartment:

- Appliances – including refrigerator, oven, electric cooktop, dishwasher, washer & dryer
- Entryway lighting
- Elegant security entry doors
- High quality interior doors
- Porcelain tile flooring size 60/120
- Tall windows
- Full apartment air conditioning
- Built-in cabinetry in the bedrooms and storage areas
- Stylish lighting fixtures
- Sun terrace
- Underground private parking

In the bathroom:

- Built-in cabinet with a luxurious sink, countertop, faucet, and mirror
- Wall-mounted toilets with concealed tanks
- Glass shower cabins
- Luxurious 4-way shower mixer and faucets

In the kitchen:

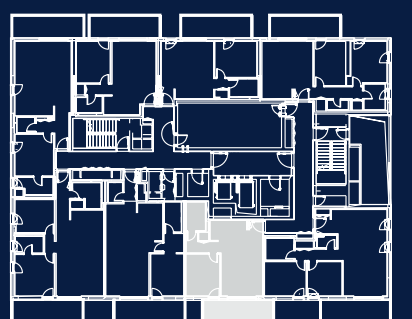
- Luxurious modern built-in cabinetry
- White appliances – including refrigerator, oven, electric cooktop, and a dishwasher
- Kitchen island in select apartments
- Caesarstone countertops



The plans and details are presented for illustration and information purposes only and do not constitute any commitment on the part of the company, including regarding measurements, areas, and accompanying services, and changes to the plans may occur. The furniture and additional elements in the plan are for illustrative purposes only and are not binding. The company will be bound only by a signed rental agreement. E&OE.

***6762**

More details: azrielitown@azrieli.com



שטח דירה: 48.85 מ"ר ברוטו

2-Room Apartment Style D

In the apartment:

- Appliances – including refrigerator, oven, electric cooktop, dishwasher, washer & dryer
- Entryway lighting
- Elegant security entry doors
- High quality interior doors
- Porcelain tile flooring size 60/120
- Tall windows
- Full apartment air conditioning
- Built-in cabinetry in the bedrooms and storage areas
- Stylish lighting fixtures
- Sun terrace
- Underground private parking

In the bathroom:

- Built-in cabinet with a luxurious sink, countertop, faucet, and mirror
- Wall-mounted toilets with concealed tanks
- Glass shower cabins
- Luxurious 4-way shower mixer and faucets

In the kitchen:

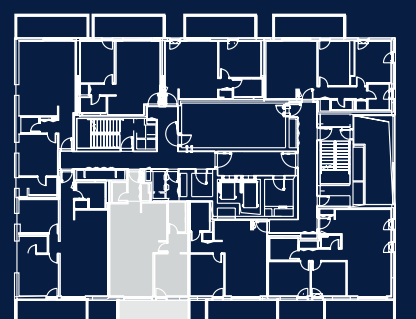
- Luxurious modern built-in cabinetry
- White appliances – including refrigerator, oven, electric cooktop, and a dishwasher
- Kitchen island in select apartments
- Caesarstone countertops



The plans and details are presented for illustration and information purposes only and do not constitute any commitment on the part of the company, including regarding measurements, areas, and accompanying services, and changes to the plans may occur. The furniture and additional elements in the plan are for illustrative purposes only and are not binding. The company will be bound only by a signed rental agreement. E&OE.

***6762**

More details: azrielitown@azrieli.com



2-Room Apartment Style F

In the apartment:

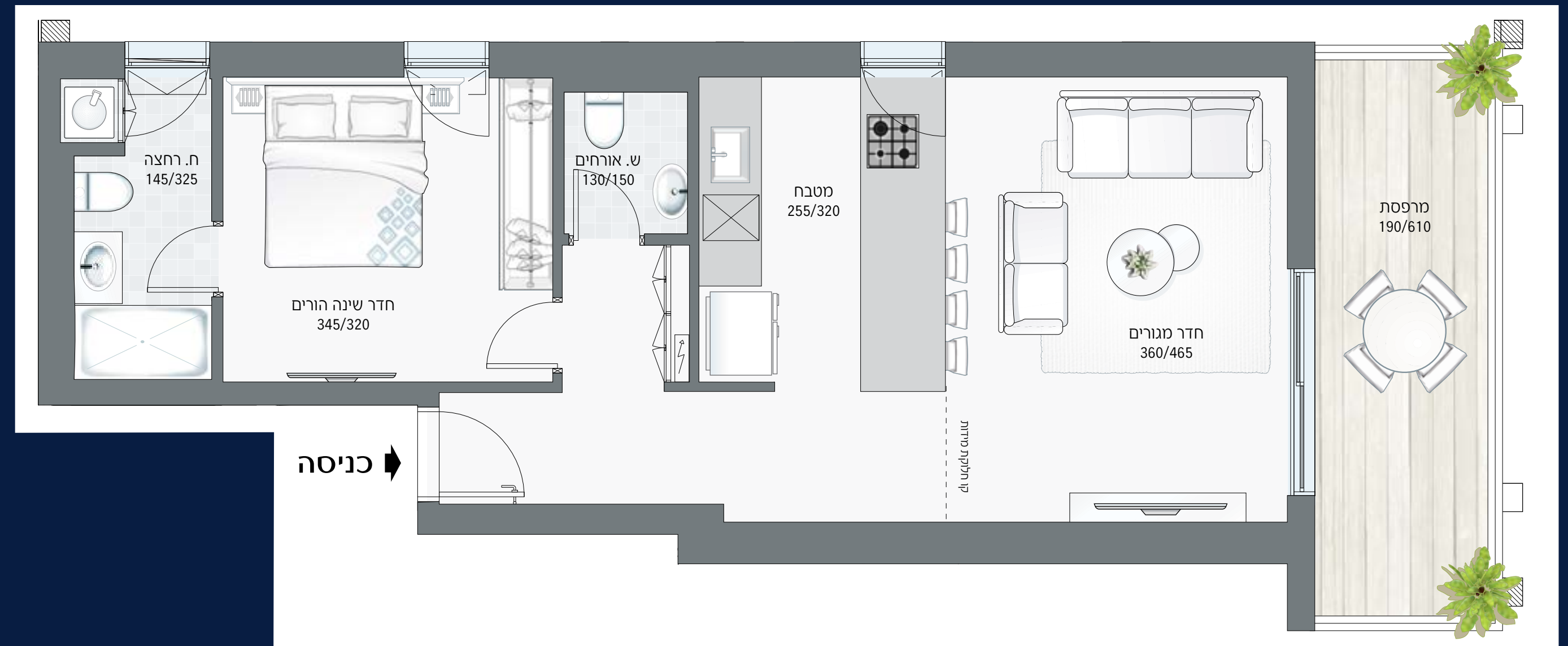
- Appliances – including refrigerator, oven, electric cooktop, dishwasher, washer & dryer
- Entryway lighting
- Elegant security entry doors
- High quality interior doors
- Porcelain tile flooring size 60/120
- Tall windows
- Full apartment air conditioning
- Built-in cabinetry in the bedrooms and storage areas
- Stylish lighting fixtures
- Sun terrace
- Underground private parking

In the bathroom:

- Built-in cabinet with a luxurious sink, countertop, faucet, and mirror
- Wall-mounted toilets with concealed tanks
- Glass shower cabins
- Luxurious 4-way shower mixer and faucets

In the kitchen:

- Luxurious modern built-in cabinetry
- White appliances – including refrigerator, oven, electric cooktop, and a dishwasher
- Kitchen island in select apartments
- Caesarstone countertops

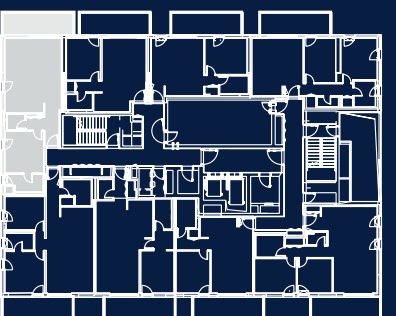


כניסה

The plans and details are presented for illustration and information purposes only and do not constitute any commitment on the part of the company, including regarding measurements, areas, and accompanying services, and changes to the plans may occur. The furniture and additional elements in the plan are for illustrative purposes only and are not binding. The company will be bound only by a signed rental agreement. E&OE.

***6762**

More details: azrielitown@azrieli.com



שטח דירה: 62.38 מ"ר ברוטו

2-Room Apartment Style G

In the apartment:

- Appliances – including refrigerator, oven, electric cooktop, dishwasher, washer & dryer
- Entryway lighting
- Elegant security entry doors
- High quality interior doors
- Porcelain tile flooring size 60/120
- Tall windows
- Full apartment air conditioning
- Built-in cabinetry in the bedrooms and storage areas
- Stylish lighting fixtures
- Sun terrace
- Underground private parking

In the bathroom:

- Built-in cabinet with a luxurious sink, countertop, faucet, and mirror
- Wall-mounted toilets with concealed tanks
- Glass shower cabins
- Luxurious 4-way shower mixer and faucets

In the kitchen:

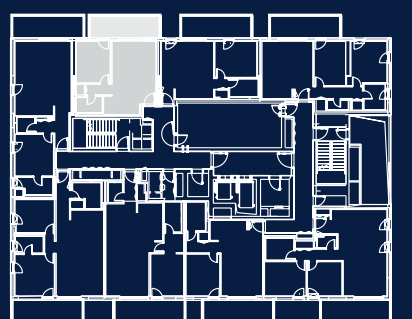
- Luxurious modern built-in cabinetry
- White appliances – including refrigerator, oven, electric cooktop, and a dishwasher
- Kitchen island in select apartments
- Caesarstone countertops



The plans and details are presented for illustration and information purposes only and do not constitute any commitment on the part of the company, including regarding measurements, areas, and accompanying services, and changes to the plans may occur. The furniture and additional elements in the plan are for illustrative purposes only and are not binding. The company will be bound only by a signed rental agreement. E&OE.

***6762**

More details: azrielitown@azrieli.com



2-Room Apartment Style H

In the apartment:

- Appliances – including refrigerator, oven, electric cooktop, dishwasher, washer & dryer
- Entryway lighting
- Elegant security entry doors
- High quality interior doors
- Porcelain tile flooring size 60/120
- Tall windows
- Full apartment air conditioning
- Built-in cabinetry in the bedrooms and storage areas
- Stylish lighting fixtures
- Sun terrace
- Underground private parking

In the bathroom:

- Built-in cabinet with a luxurious sink, countertop, faucet, and mirror
- Wall-mounted toilets with concealed tanks
- Glass shower cabins
- Luxurious 4-way shower mixer and faucets

In the kitchen:

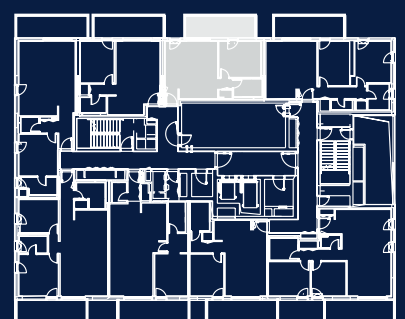
- Luxurious modern built-in cabinetry
- White appliances – including refrigerator, oven, electric cooktop, and a dishwasher
- Kitchen island in select apartments
- Caesarstone countertops



The plans and details are presented for illustration and information purposes only and do not constitute any commitment on the part of the company, including regarding measurements, areas, and accompanying services, and changes to the plans may occur. The furniture and additional elements in the plan are for illustrative purposes only and are not binding. The company will be bound only by a signed rental agreement. E&OE.

***6762**

More details: azrielitown@azrieli.com



שטח דירה: 45.08 מ"ר ברטו